

FERHATPAŞA, 17. SK. NO:127
ATAŞEHİR/İSTANBUL TÜRKİYE

+90(216) 489 20 66

+90(541) 489 20 88



ABOUT US

UPSET Elektronik, with its knowledge and motorering infrastructure of more than 20 years in the field of power electronics; offers high value-added, quality, competitive uninterruptible power supply solutions and services. UPSET Elektronik, which entered the sector with power electronics products; It continues to carry out its product range in a very wide area by providing quality service in the fields of Voltage Regulators, Dc Power Supplies, Rectifiers, Inverter Systems, Dry Type Fully Maintenance-Free Batteries, Motor Drivers, Elevator Control Systems and Panels. As always in this developing product range and product variety, it has never given up on the principle of quality product and quality service.

UPSET Elektronik, which closely follows the developments in the sector and turns these developments into a competitive advantage for its customers, does not compromise on quality and trust, and is preferred more and more by its customers with its unconditional customer satisfaction-oriented quality approach, has grown by increasing the number of customers and sales figures every year, and today in the sector. has become one of the leading, leading, reliable and leading companies.

UPSET Elektronik has set itself a mission to continue to transfer its resources to the sector by keeping up with the rapidly changing technology and development of the world. With this mission, UPSET Elektronik is getting closer to its goal of becoming a global market leader day by day by investing not only in machinery but also in people and technology. With the increasing responsibility of providing better service, better quality and more competitive products to its customers day by day, UPSET Elektronik has made it a principle to make continuous investments and to keep customer satisfaction at the highest level with its sales and after-sales services.

Yours sincerely



ELEVATOR MOTOR DRIVERS





ELEVATOR MOTOR DRIVER

EVEN THE VOLTAGE IS 300 VAC OR HIGHER IT CONTINUES TO WORK.
WHEN THE INPUT VOLTAGE LOWER THAN 300VAC, LOW VOLTAGE
PROTECTION IS ACTIVE WITHIN 15 MS.

DRIVER FEATURES

Maximum Motor Capacity (kW)		7,5	11	15
OUTPUT	Rated Output Capacity (KVA)	14	18	24
	Rated Output Current (A)	18	27	34
	Max Output Voltage (V)	3 FAZ 380/400/415/440/460V		
	Phase, Voltage, Frequency	3 FAZ 380/400/415/440/460 V 50/60 HZ		
INPUT	Frequency Range	5%		
	Sudden Voltage Drop Operating Voltage	300 VAC OR HIGHER IT CONTINUES TO WORK AT VOLTAGES. WHEN THE INPUT VOLTAGE LOWERS 300 VAC OR LOWER, LOW VOLTAGE PROTECTION IS ACTIVE WITHIN 15 MS.		



ELEVATOR MOTOR DRIVER

CONTROL FEATURES

CONTROL MODE	PG CARD VECTOR CONTROL, VOLTAGE VECTOR V/F, TORQUE CONTROL
STARTING TORQUE	150% 0 HZ (PG CARD VECTOR CONTROL) 120% DE 0.5 HZ (VOLTAGE VECTOR V/F), 0.5HZ at 150% DE
SPEED CONTROL RANGE	1:100 (WITH PG VECTOR CONTROL), 1:1200 (WITHOUT PG VECTOR CONTROL)
SPEED CONTROL ACCURACY	2%
TORQUE LIMIT	WITH PARAMETER
TORQUE ACCURACY	5%
TORQUE ACCURACY	0-120 HZ
FREQUENCY ACCURACY	0,01% DIGITAL CONTROLLER
ACCELERATION / DECELERATION TIME	0,01-600 S
SPEED ADJUSTMENT	DIGITAL



ELEVATOR MOTOR DRIVER

PROTECTION FEATURES

MOTOR OVERLOAD PROTECTION	FUNCTION CAN BE USED THROUGH PARAMETER SETTINGS
MOTOR OVERLOAD PROTECTION	< 3HZ:160%, 5 S > 3HZ: 185 % , 10S
SHORT CIRCUIT PROTECTION	AGAINST A SHORT CIRCUIT IN ANY TWO OUTPUT PHASE PROTECTS THE LIFT FROM OVERCURRENT.
HIGH INPUT VOLTAGE PROTECTION	> 725 V
OUTPUT GROUND FAULT PROTECTION	IF THE FRAME IS SHORT CIRCUIT DURING OPERATION, IT WILL CUT OUT THE OUTPUT TO PROTECT THE LIFT INVERTER.
OUTPUT PHASE UNSTABLE PROTECTION	IF THERE IS AN UNSTABLE OUTPUT CURRENT, THE OUTPUT WILL CUT OFF TO PROTECT THE LIFT INVERTER.



ELEVATOR MOTOR DRIVER

ENVIRONMENTAL FEATURES

AMBIENT TEMPERATURE	-10 +45
MOISTURE	95% RH (NOT CONDENSED)
STORAGE TEMPERATURE	(-20) (+60)DEGREE (SHORT TERM SHIPPING)
INSTALLATION LOCATION	INDOOR AREA (WHERE NOT CORROSIVE GAS AND EXCESSIVE DUST)
HEIGHT	< 1000 M
PROTECTION CLASS	IP20
COOLING CLASS	FORCED AIR COOLING

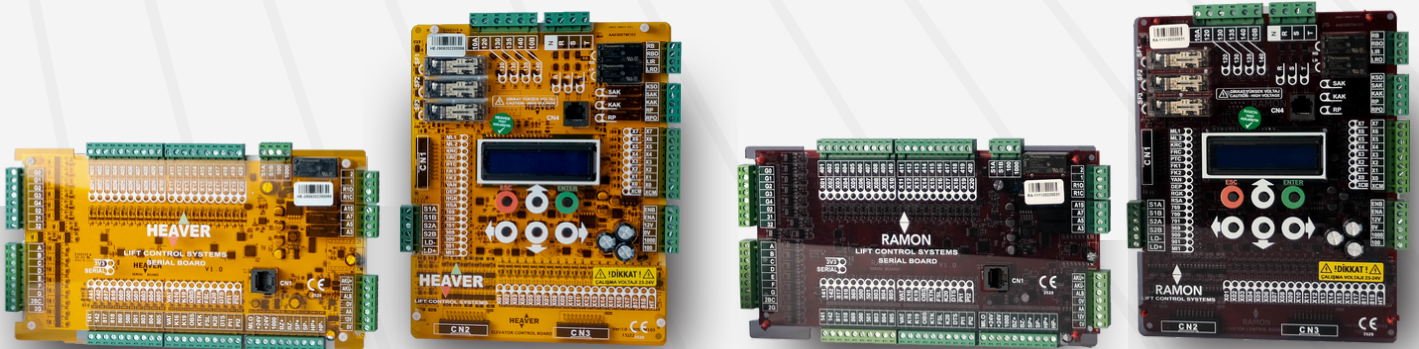
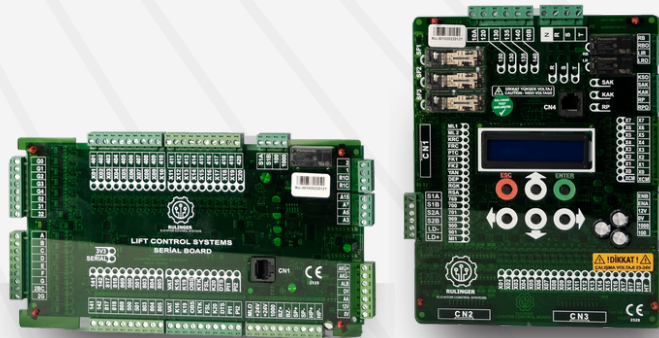


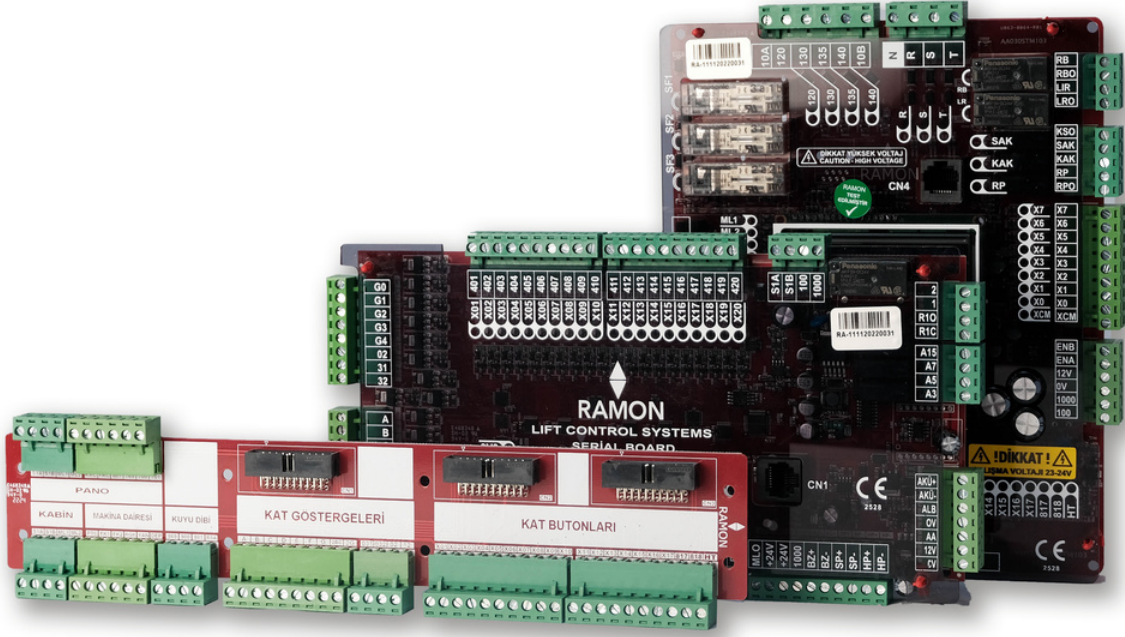
ELEVATOR MOTOR DRIVER

OPTIONAL FEATURES

	60 VDC EMERGENCY RESCUE FUNCTION
OPEN LOOP VECTOR CONTROL	EXTERNAL UPS INPUT. (NO UPS CONTACTOR NEEDED)
V/F CONTROL, SYNC AND ASYNCHRON CONTROL	SMART FAN WITH TEMPERATURE CONTROL
EASY SETUP	LOW FREQUENCY, QUIET OPERATION
STABLE OPERATION WITH FACTORY SETTINGS	FEATURE TO WORK WITHOUT AUTO-TUNNING ON INDUCTION motor
INTERNAL LCD PANEL	ADVANCED SPEED AND TORQUE CONTROL
INTERNAL ENCODER BOARD	3 PROGRAMMABLE RELAY OUTPUTS
EASY RECOVERY FOR UPS	8 INSULATED DIGITAL INPUT

ELEVATOR CONTROL CARDS

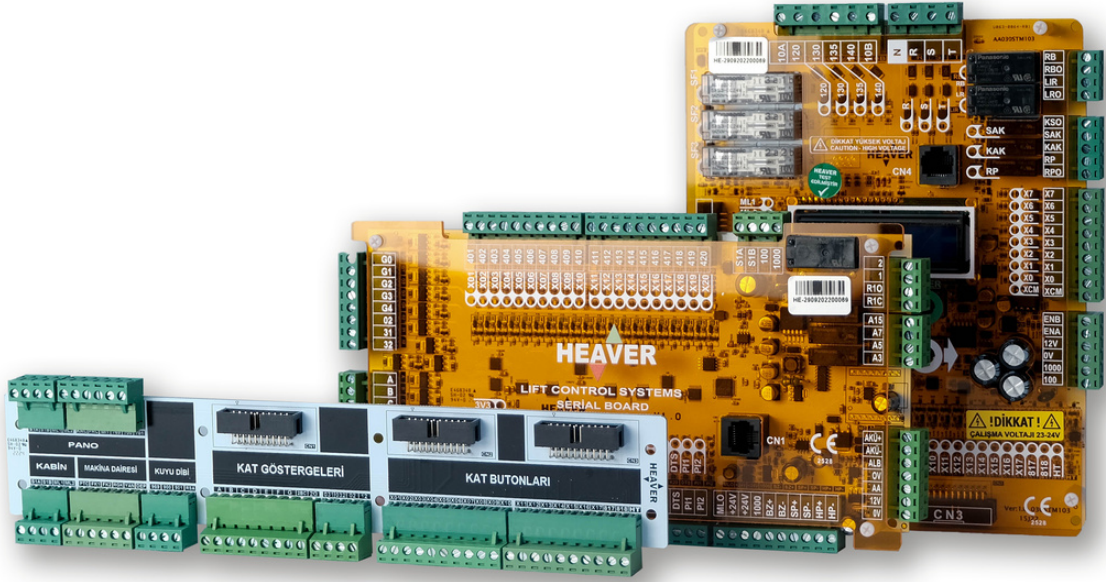




RAMON

CONTROL BOARD FEATURES

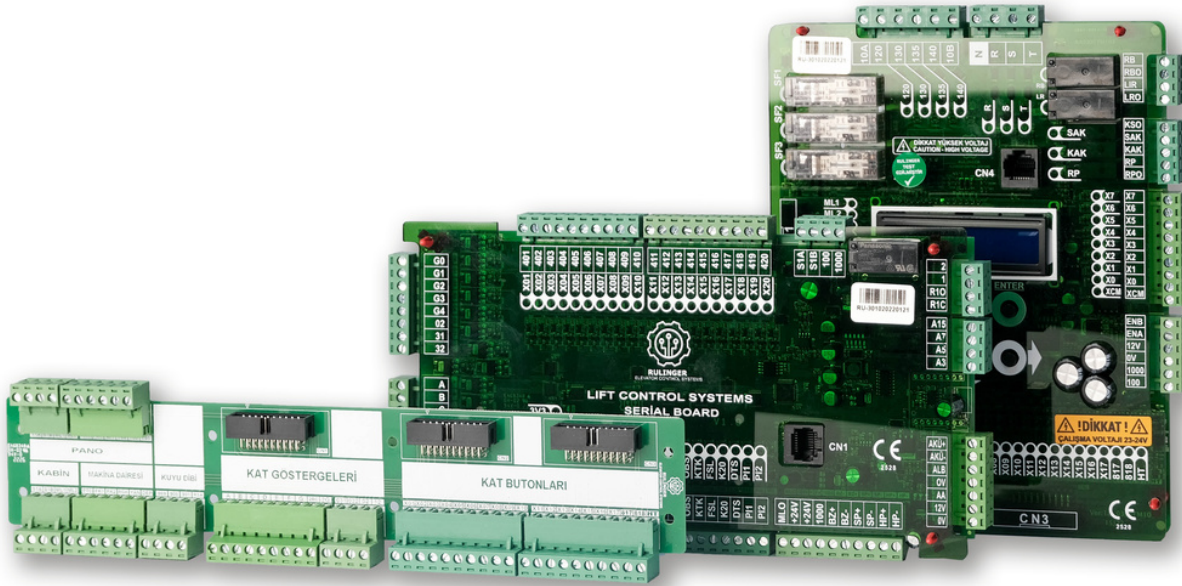
WIDTH X LENGHT X DEPTH	165 MM x 210 MM x 35 MM
PROTECTION CLASS	IP 20
OPERATING TEMPERATURE	(0 -) (60 +)
MAINS CONTROL INPUTS	3X380V,50HZ
CONTROL SUPPLY VOLTAGE	24+5 VDC
SAFETY CIRCUIT VOLTAGE	230 VAC
CONTROL SIGNAL INPUT	24+5 VDC
CONTROL SIGNAL OUTPUT	24+5 VDC



HEAVER

WORKING FUNCTIONS

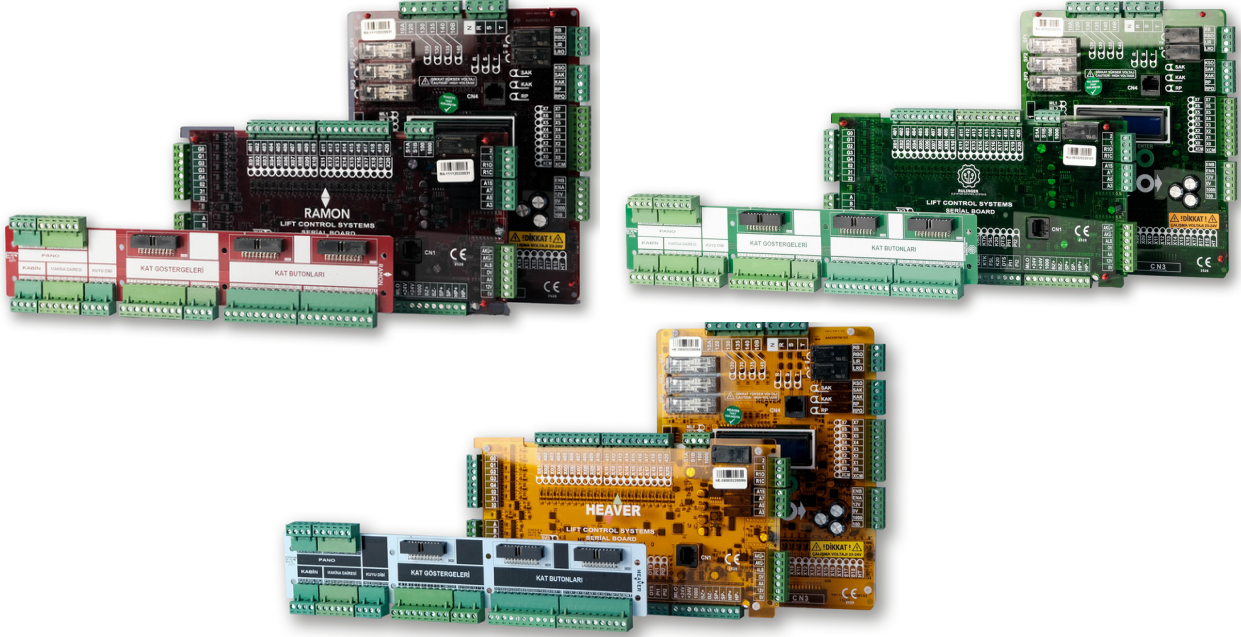
- SERIAL INSTALLATION CONNECTION WITH CABINET
- INTERNAL PHASE SEQUENTIAL MOTOR PROTECTION CIRCUIT
- INTERNAL CONTROL INPUTS AND OUTPUTS FOR TWO AUTOMATIC DOORS
- SHORT-CIRCUIT PROTECTED DIGITAL AND SIGNAL OUTPUTS



RULINGER
ELEVATOR CONTROL SYSTEMS

WORKING FUNCTIONS

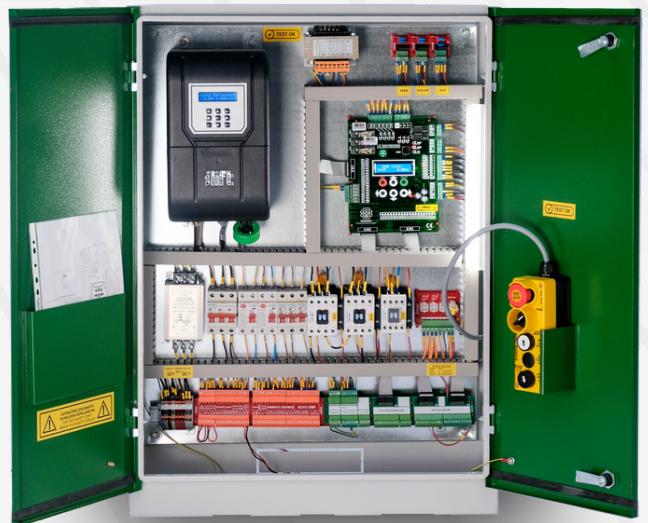
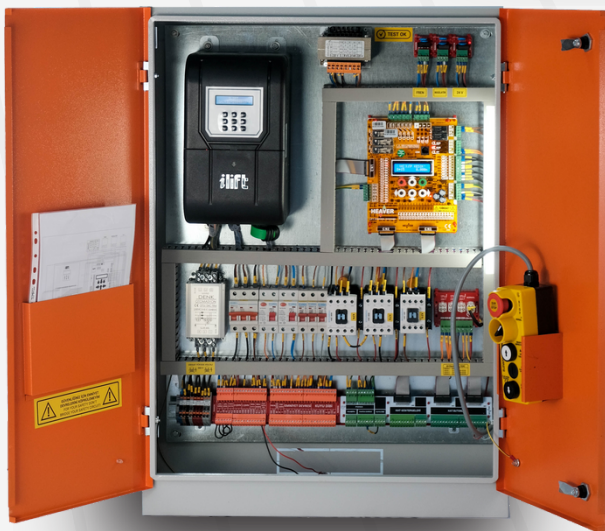
- **7 SEGMENT, GRAY AND BINARY CODE OUTPUTS (FUNCTIONAL)**
- **ENCODER CONTROLLED LEVELING**
- **WELL READING WITH ENCODER CONTROL (WELL MEASUREMENT)**
- **17 STOP WORK**



WORKING FUNCTIONS

- **CONTROLLER TYPE (MIXED)**
- **ASSIGNABLE LIMIT BREAKERS**
- **ENABLE COMMAND DIRECT EXIT (SYSTEM READY COMMAND)**
- **EXTERNAL DOOR AND INTERIOR DOOR EXTERNAL SHORT CIRCUIT CONTROL**

ELEVATOR CONTROL PANELS





RAMON

GEARED BOARD OPERATING CHARACTERISTICS

WIDTH x LENGHT x DEPTH	65 CM x 90 CM x 25 CM
PROTECTION CLASS	IP 42
NUMBER OF STOPS	17
DRIVER TYPE	WELL BOTTOM REVISION
DOOR TYPE	"FULL AUTOMATIC, HALF AUTOMATIC, DOUBLE AUTOMATIC DOOR (OPTIONAL)"
WORKING VOLTAGE	220V - 380 V ,50HZ-60 HZ
BREAK OUTPUT VOLTAGE	190 VDC
REGULATOR OUTPUT VOLTAGE	190 VDC
RESCUE TYPE	UPS 220 VAC EXTERNAL RESCUE 60 VDC (OPTIONAL)
LIGHTING	220V LED LUMINAIRE
CABIN TOP REVISION	STANDARD (SERIAL COMMUNICATIONS)
WELL BOTTOM REVISION	STANDARD



HEAVER

GEARLESS BOARD OPERATING FEATURES

WIDTH x LENGHT x DEPTH	40 CM x 200 CM x 25 CM
PROTECTION CLASS	IP 42
NUMBER OF STOPS	17
DRIVER TYPE	PG CARD VECTOR CONTROL
DOOR TYPE	FULL AUTOMATIC, HALF AUTOMATIC, DOUBLE AUTOMATIC DOOR (OPTIONAL)
WORKING VOLTAGE	220V - 380 V ,50HZ-60 HZ
BREAK OUTPUT VOLTAGE	190 VDC
REGULATOR OUTPUT VOLTAGE	190 VDC
RESCUE TYPE	UPS 220 VAC EXTERNAL RESCUE 60 VDC (OPTIONAL)
LIGHTING	220V LED LUMINAIRE
CABIN TOP REVISION	STANDARD (SERIAL COMMUNICATIONS)



RULINGER
ELEVATOR CONTROL SYSTEMS

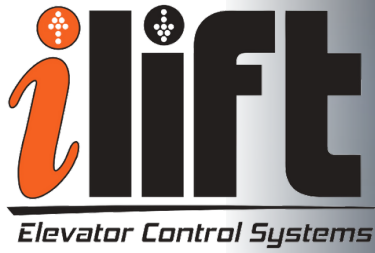
GEAR PANEL OPERATING FEATURES

STEL TYPE	GALVANIZED, STAINLESS (OPTIONAL)
INSTALLATION LOCATION	INDOOR AREA
REGULATION	TS A3 STANDARD, TS EN 81-20 STANDARD (OPTIONAL)
CABIN SPEED	FLEXIBLE
FLEXIBLE	32 SUPPLEMENTS
GEARLESS SERIES ENCODER TYPE	ENDAT, SINCIOS (OPTIONAL)
DRIVE SYSTEM	ASYNCHRON, SYNCHRONOUS (OPTIONAL)
CAB POSITION INFORMATION	ENCODER
ASYNCHRON, SYNCHRONOUS (OPTIONAL)	HYUNDAI , VIKO , XKOREN , ABB , SCHNEIDER , GLORIOUS , (OPTIONAL)



GEARLESS PANEL OPERATING FEATURES

GEAR PANEL OPERATING FEATURES	STANDART
STEEL TYPE	GALVANIZED, STAINLESS (OPTIONAL)
INSTALLATION LOCATION	INDOOR AREA
REGULATION	TS A3 STANDARD, TS EN 81-20 STANDARD (OPTIONAL)
CABIN SPEED	FLEXIBLE
FLEXIBLE	32 SUPPLEMENTS
GEARLESS SERIES ENCODER TYPE	ENDAT, SINCOS (OPTIONAL)
DRIVE SYSTEM	ASYNCHRON, SYNCHRONOUS (OPTIONAL)
CAB POSITION INFORMATION	ENCODER
SWITCH MATERIAL GROUP	HYUNDAI, VIKO , XKOREN , ABB , SCHNEIDER , GLORIOUS , (OPTIONAL)



SKY IS THE LIMIT



England, Greece, Romania, Bulgaria, Ukraine, Russia, Belarus, Kazakhstan, Turkmenistan, Uzbekistan, Azerbaijan, Vietnam, Bangladesh, India, Saudi Arabia, Kuwait, United Arab Emirates, Bahrain, Jordan, Iran, Iraq, Lebanon, Egypt, Sudan, Tunisia, Nigeria, Cameroon, South Africa, Somalia



UNINTERRUPTED POWER





LIFTING YOU TO
NEW POSSIBILITIES

FERHATPAŞA, 17. SK. NO:127
ATAŞEHİR/İSTANBUL TÜRKİYE

+90(216) 489 20 66
+90(541) 489 20 88

